

VILLAGE OF EAST AURORA

**FULL DEPTH ROAD  
RECONSTRUCTION &  
INFRASTRUCTURE  
IMPROVEMENTS  
WEST FILLMORE AVENUE**

# INTRODUCTIONS



## Clark Patterson Lee

26 Mississippi Street, Suite 300  
Buffalo, NY

Steven R. Tanner, P.E. – Senior Associate, Phone: (716) 218-4741 Email: [stanner@clarkpatterson.com](mailto:stanner@clarkpatterson.com)

Jason Havens, P.E. –Associate, Phone: (716) 218-4731  
Email: [jhavens@clarkpatterson.com](mailto:jhavens@clarkpatterson.com)

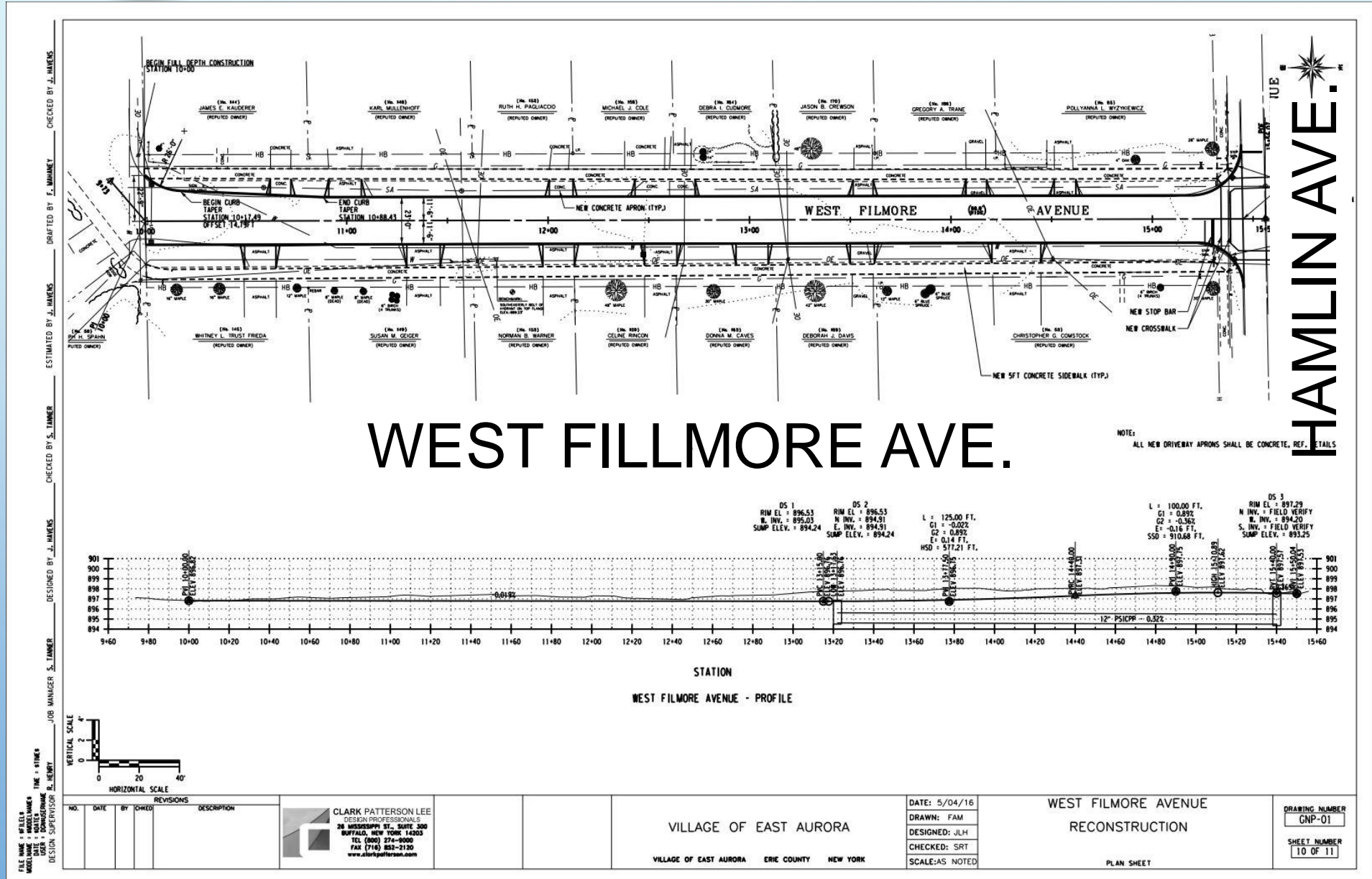
## Village of East Aurora

Matt Hoeh – Superintendent, Department of Public Works  
Email: [Matt.hoeh@east-aurora.ny.us](mailto:Matt.hoeh@east-aurora.ny.us), phone: (716) 652-6057

Bryan Gazda – Village Administrator

Email: [Bryan.gazda@east-aurora.ny.us](mailto:Bryan.gazda@east-aurora.ny.us), phone: (716) 652-6000

# PROJECT AREA



# PROJECT COMPONENTS

- **NEW WATER MAIN**

- FROM HAMLIN AVE TO EXISTING 8" WATER MAIN APPROXIMATELY 200 FEET FROM THE SCHOOL PROPERTY.
- 8" DUCTILE IRON PIPE, CLASS 52, AND FITTINGS.

- **NEW WATER SERVICES**

- TO THE RIGHT OF WAY INCLUDING NEW CURB STOP AND CURB BOX, CONNECT TO EXISTING SERVICE LINES.

- **NEW FIRE HYDRANTS**

- REMOVAL OF OLD

- **FULL DEPTH ROAD RECONSTRUCTION**

- NEW GEOTEXTILE GRID, 12" SUBBASE STONE, 3" BASE COURSE ASPHALT, 2" BINDER COURSE ASPHALT, 1" TOP COURSE ASPHALT.
- NEW SIDEWALKS, CONCRETE DRIVEWAY APPROACHES AND GUTTERS
- NEW VERTICAL ROADWAY ALIGNMENT WITH IMPROVED DRAINAGE AND NEW STORM DRAINS AND PIPES.

# PROJECT SCHEDULE

- ADVERTISE TO BID: SECOND WEEK OF FEBRUARY
- BID OPENING: MARCH 10, 2017
- VILLAGE AWARD OF BID: MARCH 20, 2017
- ESTIMATED START OF CONSTRUCTION: MID APRIL, 2017
- PROJECT SUBSTANTIALLY COMPLETE: MIDDLE OF JULY, 2017
- RESTORATION COMPLETE AND READY FOR FINAL PAYMENT:  
AUGUST, 2017

# DURING CONSTRUCTION

- **DRIVEWAY ACCESS**

- MAY BE LIMITED FROM TIME TO TIME, CONTRACTOR WILL BE REQUIRED TO NOTIFY RESIDENTS IN ADVANCE. WHEN DRIVEWAY APRONS ARE POURED, RESIDENTS WILL BE REQUIRED TO PARK IN THE STREET FOR APPROXIMATELY A WEEK.

- **THERE WILL BE DUST**

- CONTRACTOR IS REQUIRED TO PROVIDE WATERING TRUCKS, HOWEVER CONSTRUCTION WORK WILL CREATE DUST. KEEP WINDOWS CLOSED IN FRONT OF HOUSE WHENEVER POSSIBLE.

- **WATER**

- SHOULD ONLY BE SHUT DOWN WHEN THE CONTRACTOR SWITCHES THE SERVICE FROM THE OLD MAIN TO THE NEW MAIN, AND NOTIFICATIONS WILL GO OUT. SHUT DOWN SHOULD LAST NO LONGER THAN 4 HOURS.

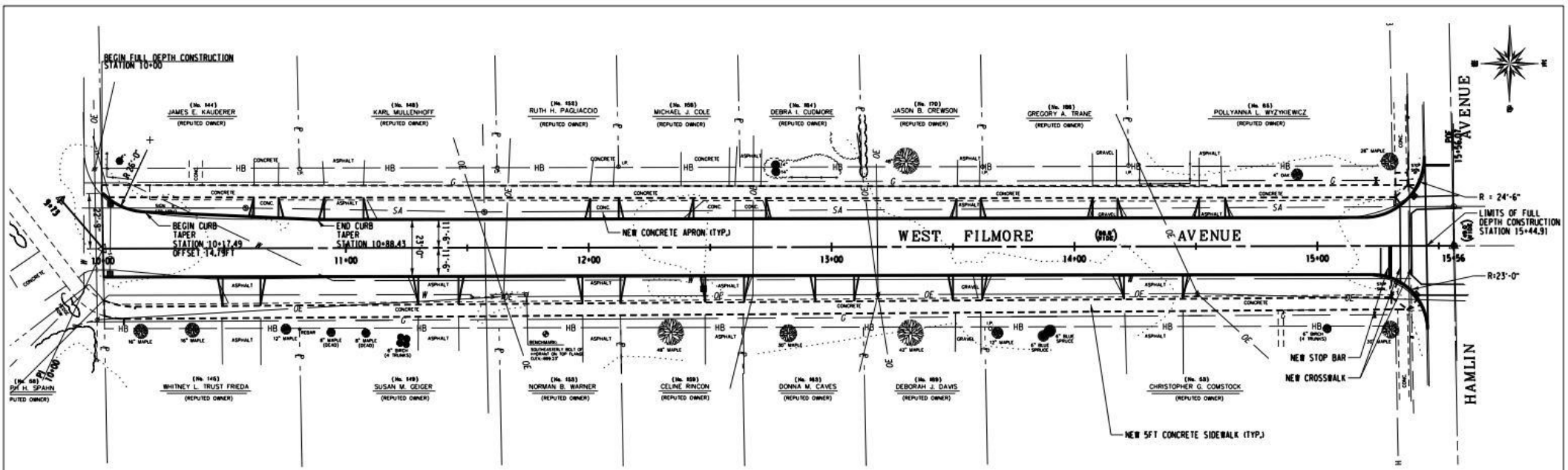
- **ACCIDENTS DO HAPPEN**

- CONTRACTOR CAN HIT UNMARKED OR INCORRECTLY LOCATED UTILITIES. THEY WILL NOTIFY RESIDENTS IF THEY ARE HOME AND PROCEED WITH REPAIRS TO GET SERVICES REPAIRED AS QUICKLY AS POSSIBLE.

- **NEW TOPSOIL AND GRASS**

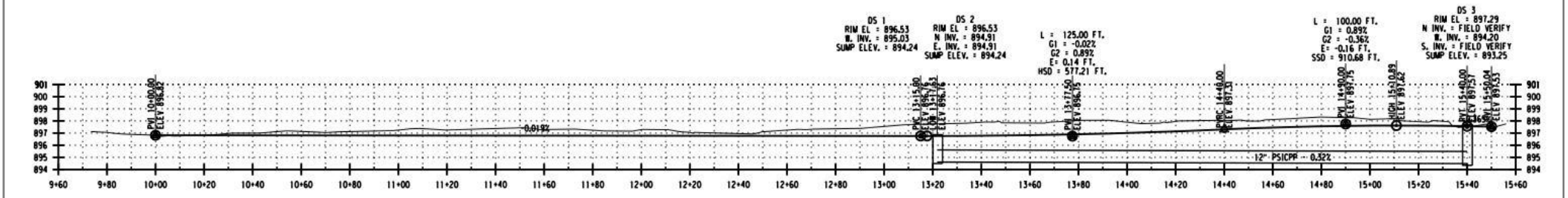
- WILL BE PLANTED, RESIDENTS ARE ASKED TO HELP IN WATERING NEWLY PLANTED GRASS.

FILE NAME: STILES MODEL NAME: WESTFILM DATE: 5/04/16 USER: DOMINGOS DESIGN SUPERVISOR: R. HENRY JOB MANAGER: S. TAMMER DESIGNED BY: J. HANES CHECKED BY: S. TAMMER DRAFTED BY: J. HANES CHECKED BY: F. MINANEY ESTIMATED BY: J. HANES

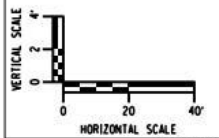


# ROAD PLAN

NOTE:  
ALL NEW DRIVEWAY APRONS SHALL BE CONCRETE, REF. DETAILS



# ROAD PROFILE



NO.	DATE	BY	CHKD	REVISIONS	DESCRIPTION

**CLARK PATTERSON LEE**  
DESIGN PROFESSIONALS  
26 MISSISSIPPI ST., SUITE 300  
BUFFALO, NEW YORK 14203  
TEL (800) 274-9090  
FAX (716) 852-2120  
www.clarkpatterson.com

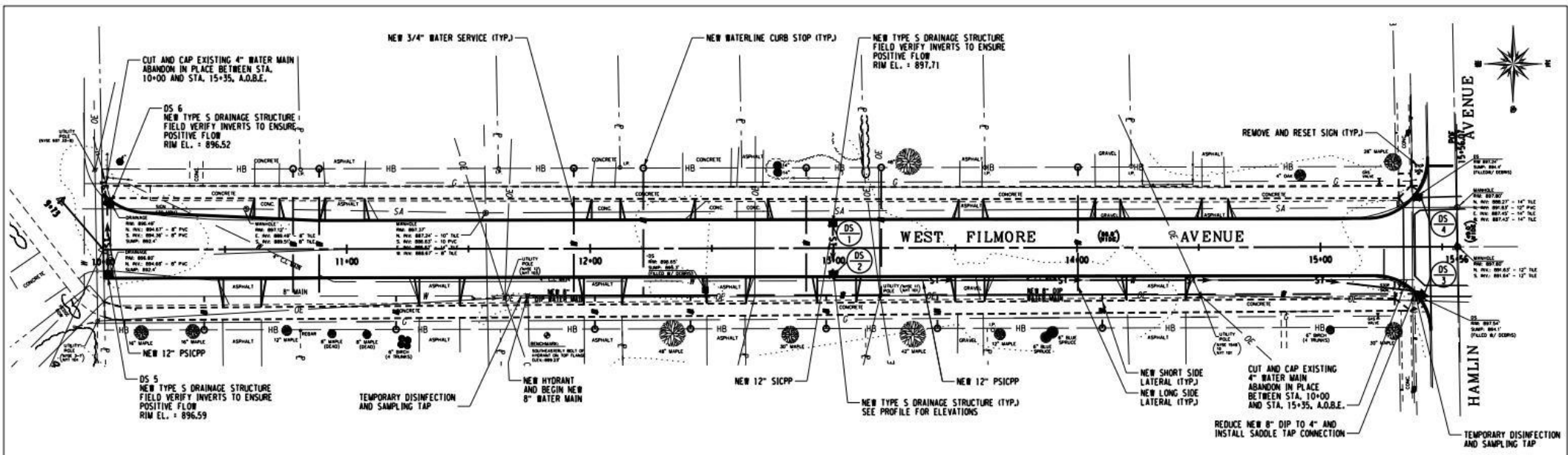
VILLAGE OF EAST AURORA  
VILLAGE OF EAST AURORA    ERIE COUNTY    NEW YORK

DATE: 5/04/16  
DRAWN: FAM  
DESIGNED: JLH  
CHECKED: SRT  
SCALE: AS NOTED

WEST FILMORE AVENUE  
RECONSTRUCTION  
PLAN SHEET

DRAWING NUMBER  
**GNP-01**  
SHEET NUMBER  
**10 OF 11**

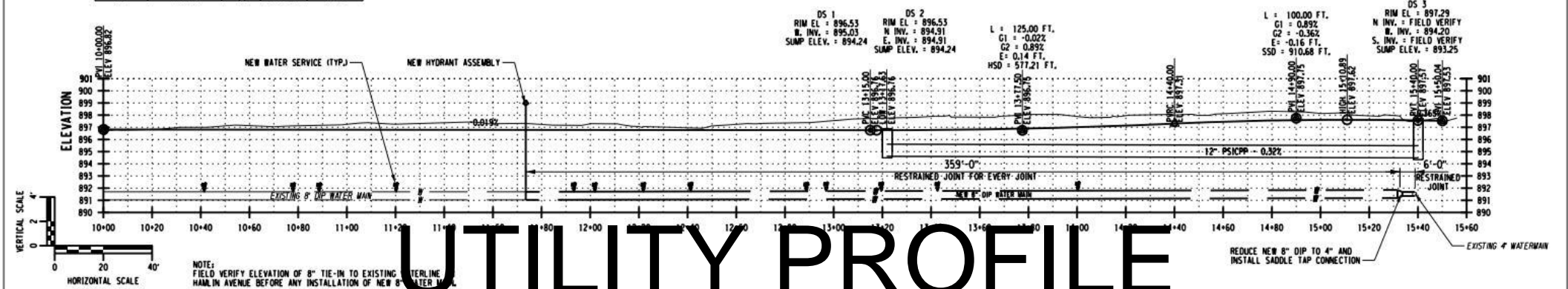
DESIGNED BY S. TAMMER  
 CHECKED BY J. HANES  
 DRAFTED BY F. MAHANEY  
 CHECKED BY J. HANES  
 ESTIMATED BY J. HANES  
 CHECKED BY S. TAMMER  
 DESIGNED BY J. HANES  
 CHECKED BY J. HANES  
 JOB MANAGER S. TAMMER  
 TIME - HOURS  
 FILE NAME - UTILITY  
 MODEL NAME - WEST FILMORE  
 DATE - 04/16/16  
 USER - DOMINGOS/SHANE  
 DESIGN SUPERVISOR - R. HENRY



**WEST FILMORE AVENUE LIST OF SERVICES**

HOUSE NO.	AVENUE	SIZE (IN)	MATERIAL	LENGTH (FT)
145	WEST FILMORE	1/2"	COPPER	14.0
144	WEST FILMORE	1/2"	COPPER	52.0
148	WEST FILMORE	1/2"	COPPER	52.0
149	WEST FILMORE	1/2"	COPPER	14.0
152	WEST FILMORE	1/2"	COPPER	52.0
153	WEST FILMORE	1/2"	COPPER	14.0
158	WEST FILMORE	1/2"	COPPER	52.0
159	WEST FILMORE	1/2"	COPPER	14.0
164	WEST FILMORE	1/2"	COPPER	52.0
163	WEST FILMORE	1/2"	COPPER	14.0
170	WEST FILMORE	1/2"	COPPER	52.0
169	WEST FILMORE	1/2"	COPPER	14.0
186	WEST FILMORE	1/2"	COPPER	52.0
53	HAMLIN	1/2"	COPPER	14.0

# UTILITY PLAN



# UTILITY PROFILE

<b>REVISIONS</b> NO. DATE BY CHRD DESCRIPTION		<b>CLARK PATTERSON LEE</b> DESIGN PROFESSIONALS 28 MISSISSIPPI ST., SUITE 300 BUFFALO, NEW YORK 14203 TEL (800) 274-9000 FAX (716) 852-2120 www.clarkpatterson.com	VILLAGE OF EAST AURORA VILLAGE OF EAST AURORA ERIE COUNTY NEW YORK		DATE: 5/04/16 DRAWN: FAM DESIGNED: JLH CHECKED: SRT SCALE: AS NOTED	<b>WEST FILMORE AVENUE</b> <b>RECONSTRUCTION</b> PROPOSED UTILITY SHEET	DRAWING NUMBER <b>UTP-01</b> SHEET NUMBER <b>11 OF 11</b>
NOTE: FIELD VERIFY ELEVATION OF 8" TIE-IN TO EXISTING WATERLINE IN HAMLIN AVENUE BEFORE ANY INSTALLATION OF NEW 8" WATER MAIN							



# CONTACTS DURING CONSTRUCTION

## Clark Patterson Lee

26 Mississippi Street, Suite 300

Buffalo, NY

Jason Havens, P.E. – Associate, Phone: (716) 218-4731

Email: [jhavens@clarkpatterson.com](mailto:jhavens@clarkpatterson.com)

Steven R. Tanner, P.E. – Senior Associate, Phone: (716) 218-4741

Email: [stanner@clarkpatterson.com](mailto:stanner@clarkpatterson.com)

Clerk of the works: To be determined

## Village of East Aurora

Matt Hoeh – Superintendent, Department of Public Works

Email: [Matt.hoeh@east-aurora.ny.us](mailto:Matt.hoeh@east-aurora.ny.us), phone: (716) 652-6057

Bryan Gazda – Village Administrator

Email: [Bryan.gazda@east-aurora.ny.us](mailto:Bryan.gazda@east-aurora.ny.us), phone: (716) 652-6000

The background is a light blue gradient with several realistic water droplets of various sizes scattered across it. The droplets have highlights and shadows, giving them a three-dimensional appearance. The word "QUESTIONS?" is centered in the middle of the image in a bold, black, sans-serif font.

**QUESTIONS?**